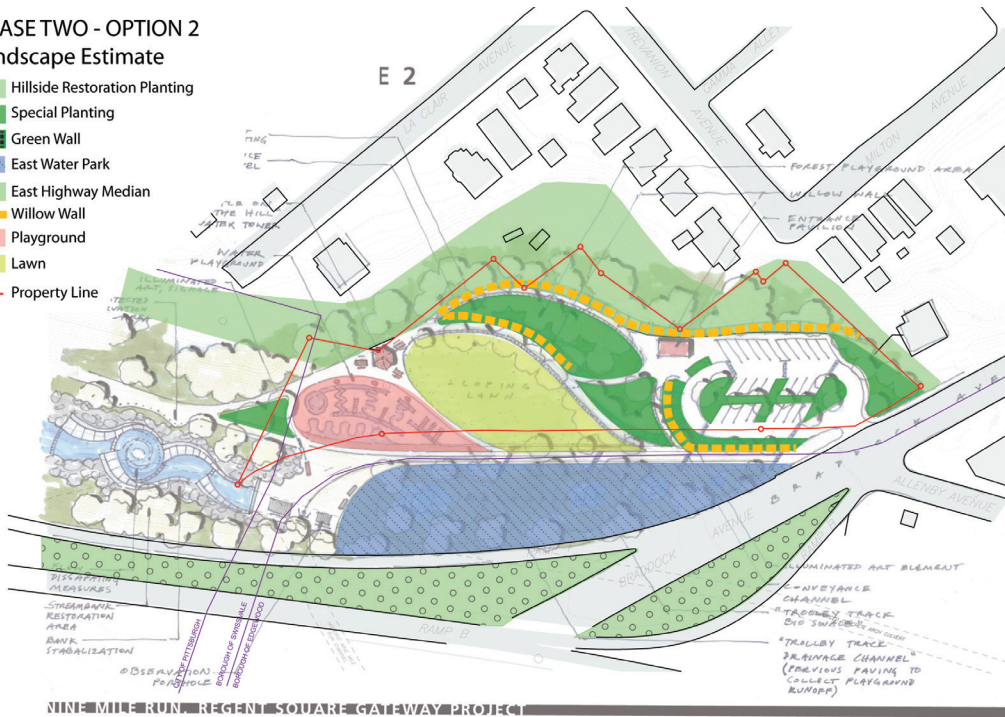


PHASE TWO - OPTION 2  
Landscape Estimate

- Hillside Restoration Planting
- Special Planting
- Green Wall
- East Water Park
- East Highway Median
- Willow Wall
- Playground
- Lawn
- Property Line



Participants at the 10 June 2006 charette help design the project.



The existing channelized and polluted 9 Mile Run

## Regent Square Gateway Project

The Nine Mile Run Watershed is a small urban watershed located in Pittsburgh's East End. Though only 6.5 square miles the watershed is home to numerous exciting projects and initiatives including the Regent Square Gateway Project (RSGP).

The RSGP will develop a new entrance to Frick Park that cleans stormwater and educates people about the Nine Mile Run Watershed. Nine Mile Run Watershed Association (NMRWA) hired Viridian Landscape Studio, Cahill Associates (now CH2MHill) and Atelier Dreiseitl to work with city officials, community members and other key stakeholders to build upon the existing concept drawings developed by the Studio for Creative Inquiry at Carnegie Mellon University and the Rocky Mountain Institute.

The team developed an integrated park plan including water play elements, sustainable stormwater management, trail connections, stream

bank stabilization and habitat restoration. The new landscapes restore habitats while cleaning and managing excess rain and snowmelt, a problem that currently wreaks havoc on Nine Mile Run by eroding streambanks and flooding it with pollutants. Viridian Landscape Studio brings its expertise in site restoration to the Regent Square Gateway Project.

- Location:** Pittsburgh, PA
- Client:** Nine Mile Run Watershed
- Size:** 6.5 acres
- Cost:** \$3.5 million
- Status:** Completed 2006